

CXCL5 Antibody

Cat No.: SJ-AB3010



Applications

Reactive Species

Human

Positive Samples

Refer to Validation Data.

Validated Applications

WB, ICC/IF, IP

Recommended Dilution

WB 1:1000-1:2000
ICC/IF 1:50-1:200
IP 1:20-1:50

Product Information

Antibody Type

Recombinant Rabbit mAb

Immunogen

A synthesized peptide derived from human CXCL5.

Modification

Unmodified

Isotype

Rabbit IgG

Clone No.

N/A

Purification Method

Affinity purification

Form

Liquid

Host

Rabbit

Clonality

Monoclonal

Conjugation

Unconjugated

Concentration

N/A

Storage Buffer

Rabbit IgG in 10mM phosphate buffered saline, pH 7.4, 150mM sodium chloride, 0.05% BSA, 0.02% sodium azide and 50% glycerol.

Storage Conditions

Store at +4°C for short term. Store at -20°C for long term. Avoid freeze/thaw cycle.

Background Information

Function

Involved in neutrophil activation. In vitro, ENA-78(8-78) and ENA-78(9-78) show a threefold higher chemotactic activity for neutrophil granulocytes.

UniProt ID

P42830

Organism

Human

Recommended Name

N/A

Short Name

N/A

Alternative Names

AMCFII; Cxcl5; ENA78; SCYB5;

Gene ID

N/A

Gene Name

N/A

Calculated MW

12 kDa

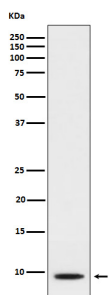
Observed MW

8 kDa

Subcellular Location

N/A

Validation Data



Western blot analysis of CXCL5 expression in A549 cell lysate treated with TNF alpha and TPA .

NOTICE: For research use only. Not for therapeutic or diagnostic purposes.

Contact

For technical support and original validation data for this product please contact:

T: 400-018-6916

E: support@sanjingbio.com

W: www.sanjingbio.com